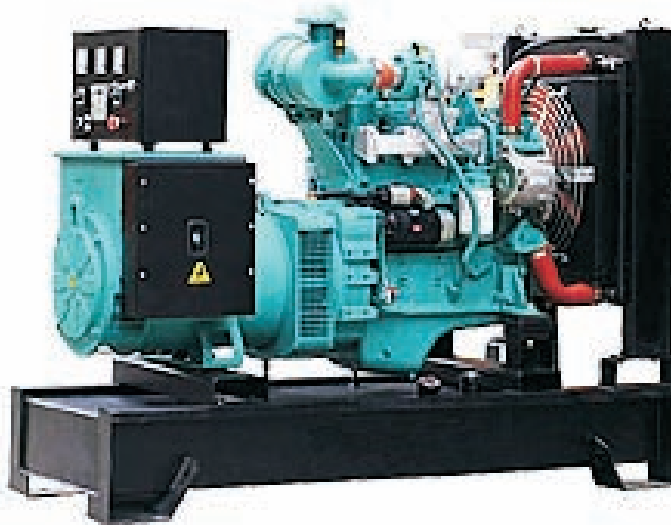


## Cummins BAIHUA-CUMMINS SERIES DIESEL GENERATING SETS



Model		KBC-40	KBC-75	KBC-80	KBC-90	KBC-120	KBC-150	KBC-170	KBC-180	KBC-200	
Rated Power(KW)		40	75	80	90	120	140	160	180	200	
ENGINE	Model	4BT3.9G	6BT5.9G	6BT5.9G1	6BT5.9G2	6BTAA5.9G	6CTA8.3G	6CTAA8.3G	6CTAA8.3-G	NTA855-G1	
	Rated output (kw)	50	86	92	102	132	163	183	200	240	
	Max output(KW)	55	Z	100	110	140	180	205	215	265	
	Governing method	Mechanical/Electrical			Electronical						
	Intaking method	Turbocharged									
	Oil volume(L)	9.5		14.3		16	23.8	26			38.6
	Displacement(L)	3.92		5.88				8.3			14
	Cylinder numbers	4						6			
	Fuel Consumption(g/kw.h)	<=210									
	Cooling Starting Method	Closed water cooled/electric starting									
GENERATOR	Model	KB-40	KB-75	KB-80	KB-90	KB-120	KB-150	KB-170	KB-180	KB-200	
	Rated output (kw(KVA))	40(50)	75(94)	80(100)	90(112.5)	120(150)	140(175)	160(200)	180(225)	200(250)	
	Rated Current(A)	72	135.3	144.3	162.4	216.5	252.6	288.7	324.8	360.8	
	Rated Voltage(V)	400/230									
	Frequency(HZ)	50/60									
	Power Factor(COS&)	0.8lagging									
	Phase / Connection	3-phase 4-wire					Y type connection				
	Excitation	Harmonica Excitation or phase Compound or brush less									
	Voltage Regulation	Automatic									
	Net Weight(kg)	830	1390	1460	1530	1700	1900	2300	2400	3100	
Packing size LWH(cm)	179x70x133		210x70x138			228x83x153		252x85x165		315x99x190	

Model		KBC-250	KBC-280	HPC-300	KBC-360	KBC-400	KBC-500	KBC-600	KBC-800	KBC-1000	
Rated Power(KW)		250	280	300	360	400	500	600	800	1000	
ENGINE	Model	NTA855-G2	NTA855-G4	NTAA855-G1	KTA19-G3	KTA19-G4	KTAA19-G7	KTA38-G2	KTA38-G5	KTA50-G3	
	Rated output (kw)	283	317	343	403	448	570	664	880	1100	
	Max output(KW)	321	351	377	448	504	630	731	970	1233	
	Governing method	Electronical									
	Intaking method	Turbocharged									
	Oil volume(L)		38.6	41	50		53		135		156
	Displacement(L)		14		18.9				38		
	Cylinder numbers			6					12		
	Fuel Consumption(g/kw.h)	<=210									
	Cooling Starting Method	Closed water cooled/electric starting									
GENERATOR	Model	HP-250	HP-280	HP-300	HP-360	HP-400	HP-500	HP-600	HP-800	HP-1000	
	Rated output (kw(KVA))	250(312.5)	280(350)	300(375)	360(450)	400(500)	500(625)	600(750)	800(1000)	1000(1250)	
	Rated Current(A)	451	505.2	541.3	649.5	721.7	902.1	1082.6	1443.4	1804	
	Rated Voltage(V)	400/230									
	Frequency(HZ)	50/60									
	Power Factor(COS&)	0.8lagging									
	Phase / Connection	3-phase 4-wire					Y type connection				
	Excitation	Harmonica Excitation or phase Compound or brush less									
	Voltage Regulation	Automatic									
	Net Weight(kg)	3250	3400	3700	4350	4800	5700	7900	8500	10200	
Packing size LWH(cm)		315x99x190			353x125x205			500x190x264		550x190x268	